



# Interactive Flat Panel <sup>A8</sup> Android 11.0

CB CE



Resolution



13MP HD camera



6-mic array



NFC Module



OTA Firmware Upgrade



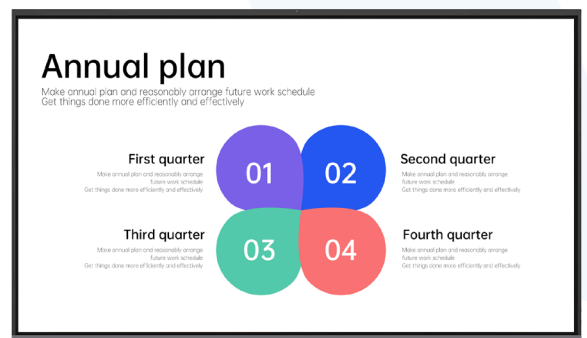
Dual colors writing



Flicker Free



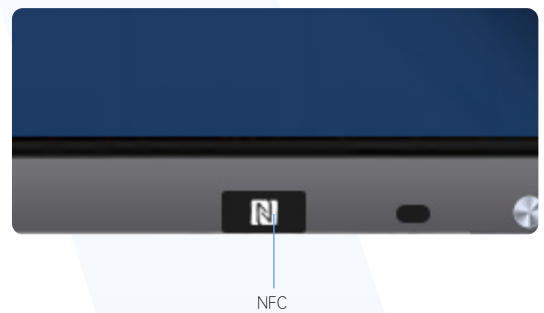
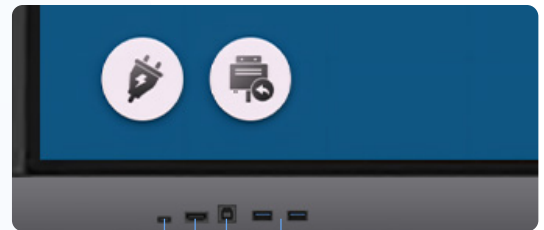
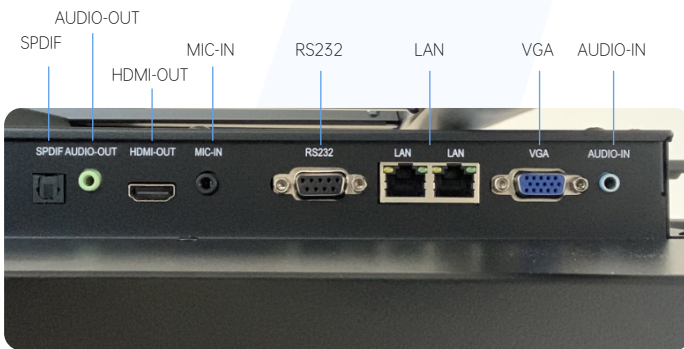
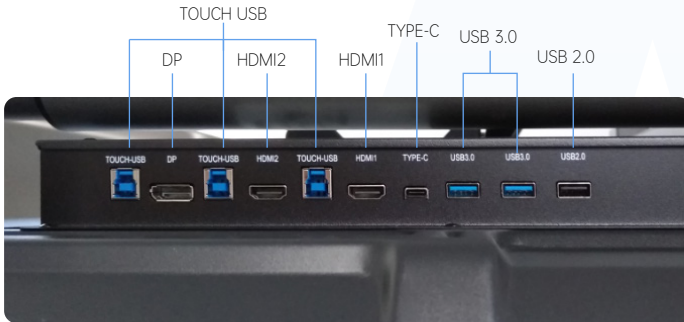
Smart Optical Character Recognition





## Simply Conference Solution

## Connection



## User-friendly whiteboard

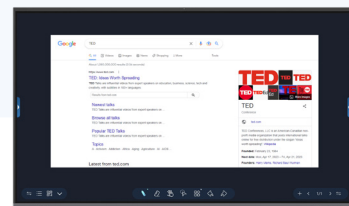
Smooth writing which makes finger and pen with different experience  
Sensitive response speed that recognizes the thickness of pen to achieve two different colors automatically



Smart Optical Character Recognition



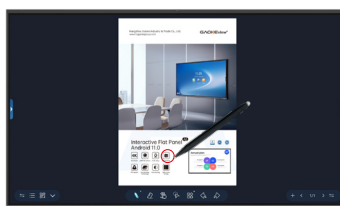
Dual different colors writing



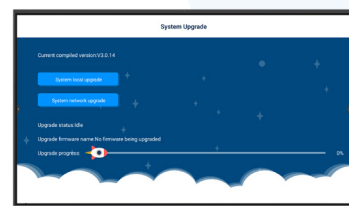
Browser inserted into whiteboard



Support writing on the inserted pictures



Support writing on the PDF file



OTA Firmware Upgrade

Display Parameter

Size	65" 75" 86"
Panel Brand	BOE/LG
Backlight Type	D-LED
Resolution(pixels)	3840x2160(pixels, RGB)
Brightness	350cd/m2(typ.) 65" 75" 400cd/m2(typ.) 86"
Visual Ratio	16:9
Contrast Ratio	1600:1 65" 75" 1600:1, 1200:1 86"
Response Time	8ms (typ.)
Pixel Pitch (mm)	0.372(H)x0.372(V) 65" 0.4296(H)x0.4296(V) 75" 0.4935(H)x0.4935(V) 86"
Refreshing Frequency	60Hz
Viewing Angle	178°(H) / 178°(V)
Life Time	50,000 Hrs (min.)
View Area (mm)	1428.48(H)x803.52(V) 65" 1649.664(H)x927.936(V) 75" 1895.04(H)x1065.96(V) 86"
Color Gamut (X% NTSC)	70%(typ.)



System

Chipset	Amlogic 311D2
CPU	Architecture: Cortex A73+A53 Working Frequency: Max 2.2GHz for big and 2.0GHz for little、Core: A73*4+A53*4
GPU	MaliG52 MP8
RAM/ROM	Standard: 4+32GB Optional: 8+128GB
OS	Android 11.0

Front Interface	Public USB x2, Touch-USB x1, HDMI IN x1, Type-C USB x1
Rear Interface	HDMI IN x2, DP IN x1, Type-C x1, VGA IN x1, AUDIO IN x1, LAN x2, USB 2.0 x1 USB 3.0 x2, TOUCH USB x3, MIC IN x1, SPDIF OUT x1, RS232 IN x1, HDMI OUT x1 AUDIO OUT x1, SD CARD x1

NFC

Standard	ISO/IEC 14443 A / ISO/IEC 14443 B
Support card type	MIFARE FeliCa
Read-write distance	<30mm
Read-write speed	106 To 424kbps
Read and write latency	<100ms

Camera & Microphone

Pixel	13Million
Array quantity	6 Mic
Pick-up Area	8m (Angle: 45°~135°)

Touch Parameter

Touch Type	Infrared Touch Frame
Surface Protection	3.2mm toughened glass
Infrared Touch	Max 40 Points(under Windows system)

Structure Parameter

Product Size(W x D x H)	1482.1x105.6x936.7mm 65" 1716.5x105.6x1069.7mm 75" 1961.8x105.6x1207.7mm 86"
Package Size (W x D x H)	1660x220x1010mm 65" 1900x225x1160mm 75" 2160x225x1310mm 86"
Net / Gross Weight	40 / 52±1KG 65" 53 / 72±1KG 75" 68 / 82±1KG 86"